

# BRUNTON

---

## RESIDENTIAL



**GLENDALE AVENUE, CHOPPINGTON, NE62**

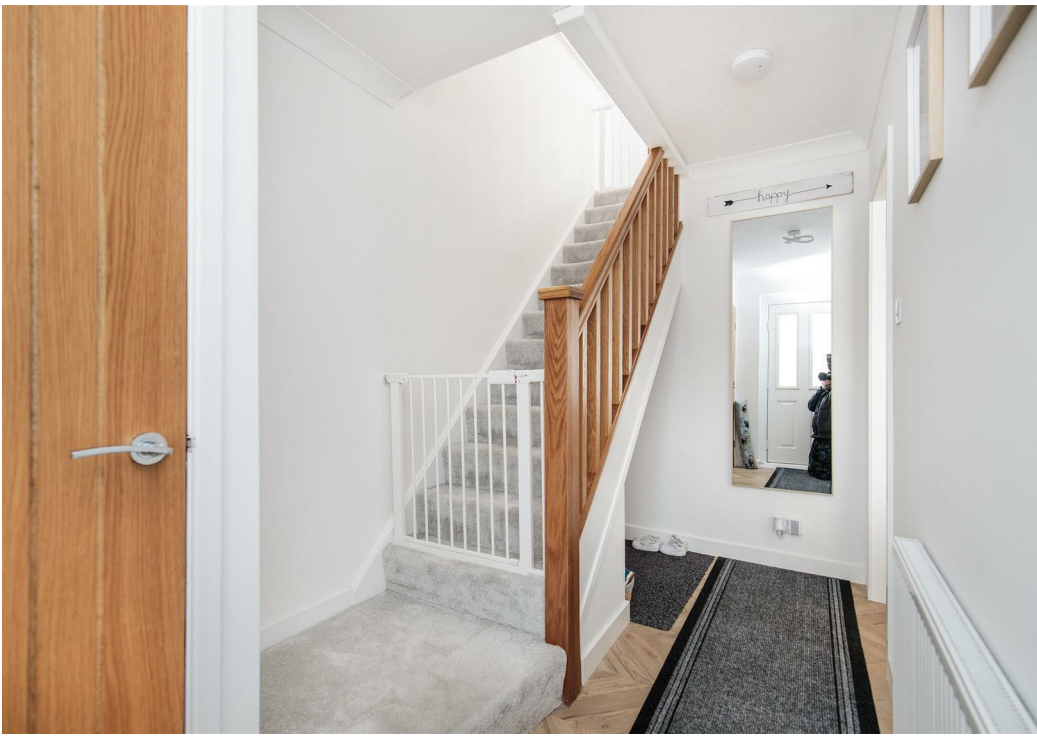
**Offers Over £210,000**

# BRUNTON

---

## RESIDENTIAL





# BRUNTON

---

## RESIDENTIAL



# BRUNTON

---

## RESIDENTIAL



### MODERNISED THROUGHOUT | GARAGE CONVERSION | GARDENS AND DRIVEWAY

Well-presented and extended, three-bedroom semi-detached home located on Glendale Avenue, Choppington.

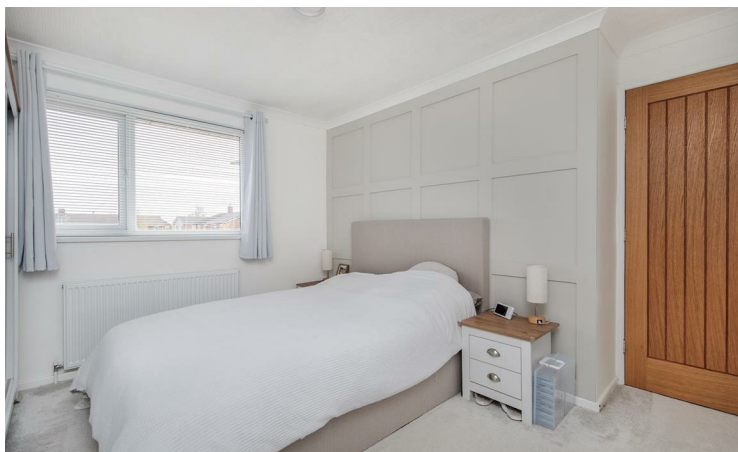
The property includes a living room, dining room, conservatory, modern kitchen, and separate utility room on the ground floor. Upstairs, there are three bedrooms and a family bathroom. Externally, the property benefits from driveway parking and an enclosed rear garden.

The property is situated in a popular residential area of Choppington, close to local shops, schools, supermarkets, and everyday amenities. There are strong transport links nearby, with easy access to Bedlington, Morpeth, and Cramlington, while the A189 provides convenient routes for commuting further afield. The area is well-suited to families, first-time buyers, and professionals looking for a well-connected location.

# BRUNTON

---

## RESIDENTIAL



# BRUNTON

---

## RESIDENTIAL

The internal accommodation comprises: a welcoming entrance hallway with stairs leading up to the first floor, a useful storage cupboard, and access to the main ground floor rooms. To the right, there is a bright living room with a large front-facing window, a feature fireplace, and ample space for furnishings.

The living room opens through to a versatile dining room, which can also be used as an additional sitting area. This space features decorative wall panelling and sliding doors opening into the conservatory, creating an additional light-filled reception space with views over the rear garden and direct access outside. From the dining room, the layout flows through to the modern fitted kitchen, fitted with a range of wall and base units, an integrated oven, an integrated microwave, a hob with extractor above, tiled flooring, tiled splashback, and access outside. Positioned off the kitchen is a generous separate utility room with plumbing for appliances, fitted units, and additional storage space.

The first-floor landing includes storage and gives access to the main bedroom, two further bedrooms, and the family bathroom. Two bedrooms are comfortable doubles, while the third is a single bedroom with built-in storage. The contemporary bathroom is fitted with a P-shaped bath with a shower over, a vanity unit, a convenient WC, inset ceiling lighting, and fully tiled walls.

Externally, the property offers a block-paved front driveway providing off-road parking for two vehicles. To the rear, there is an enclosed garden mainly laid to lawn with patio areas, fenced boundaries, and a useful garden shed.



# BRUNTON

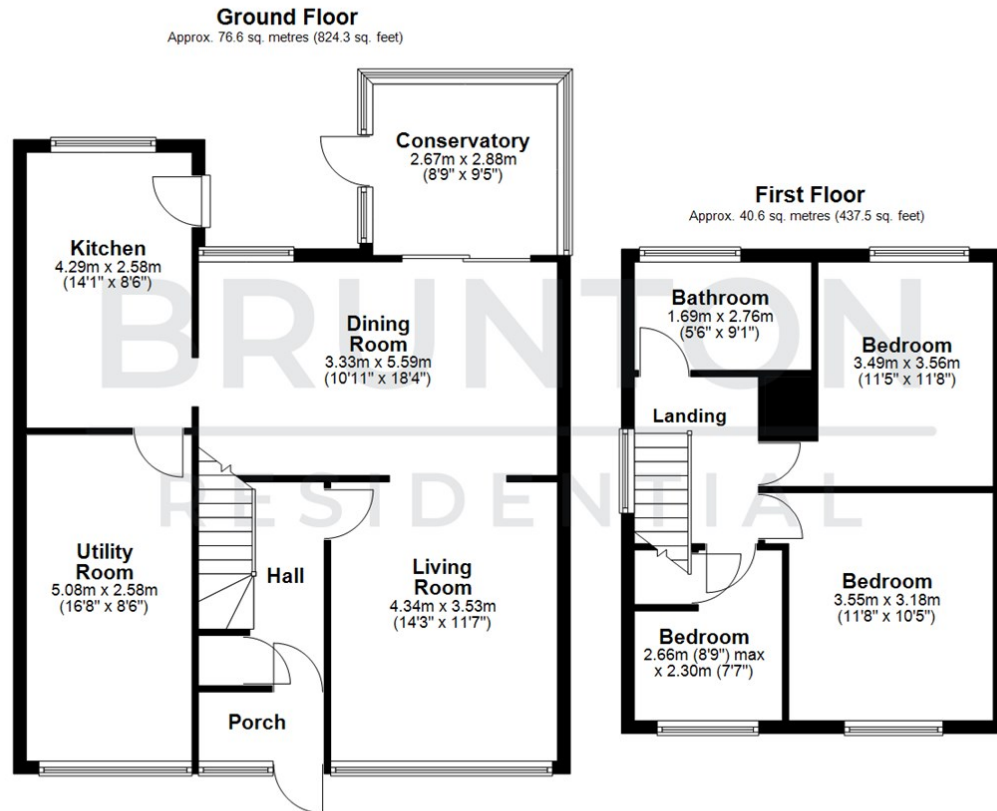
## RESIDENTIAL

TENURE : Freehold

LOCAL AUTHORITY : Northumberland CC

COUNCIL TAX BAND : B

EPC RATING : C



Total area: approx. 117.2 sq. metres (1261.9 sq. feet)

All measurements are approximate and are for illustration only.  
Plan produced using PlanUp.

